



Service Board with UTP Connector Installation Sheet



Specification

Video Output (UTP Terminal)	2.0Vpp, 100 ohm Balanced
Wire Type	Unshielded Twisted Pair Cable (24awg min)
Category Type	2 or better
Impedence	100 Ohms +/- 20%
DC Loop Resistance	52 Ohms/1,000f
Differential Capacitance	18pF/ft
Transmission Distance	Up to 750ft (229 Meters) with Passive Receiver Up to 3,000ft (914 Meters) with Active Receiver

EQUIPMENT MODIFICATION CAUTION:

Modifications are not expressly approved could create a hazardous condition.

Please visit our website for more information
www.deview.com
 Product specifications subject to change without notice.
 Certain product names mentioned herein may by trade names
 and/or registered trademarks of other companies.



V531-DC023-200
Ver.12/2008

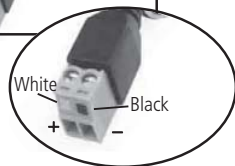
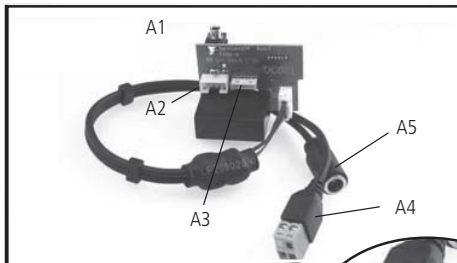
A. Before you start

This Service Board with UTP Connector is designed to facilitate your camera assembly to transmit your video signal for a longer distance.

Please read these instructions carefully before installing the board.

B. Overview

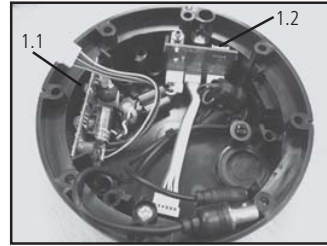
This kit includes the following:



- A1. Service Board with UTP Connector
- A2. Socket of Video-Power Cable Connector
- A3. WDR OSD Programming Connector
- A4. UTP Video Output Terminal Blcok
- A5. Power Input Connector

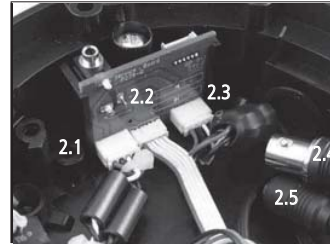
****Do not separate any part of the kit.**

C. Getting Started



Step 1.

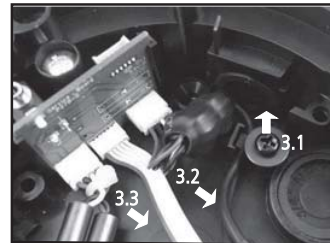
- Remove the dome cover, camera liner and camera assembly.
- On the base are Power Board (1.1) and Service Board (1.2).



Step 2.

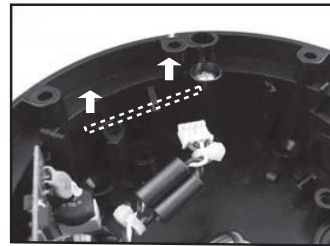
- Locate three jacks: Video-Power Connector (2.1), WDR OSD Programming Connector (2.2) and the jack (2.3) for both Video Output Connector (2.4) and Power Input Connector (2.5).

Note: WDR OSD programming connector cable will only be used with WDR cameras.



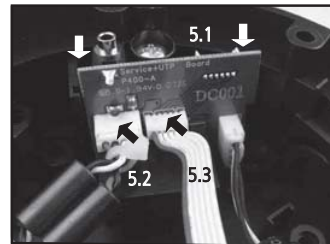
Step 3.

- Remove the guide screw (3.1).
- Disconnect the WDR OSD Programming Connector (3.2) and Video-Power Connector (3.3).



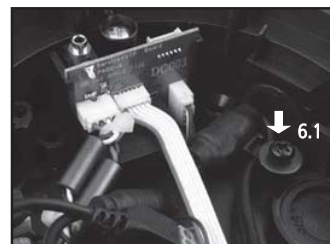
Step 4.

Remove the Service Board.



Step 5.

- Install the Service Board with UTP Connector (5.1).
- Connect Video-Power Connector (5.2) and WDR OSD Programming Connector (5.3).



Step 6.

- Collect the cables under the guide and secure them with a screw (6.1).
- Replace the camera assembly, camera liner and the dome cover.